

# iPOS Enterprise - Connections

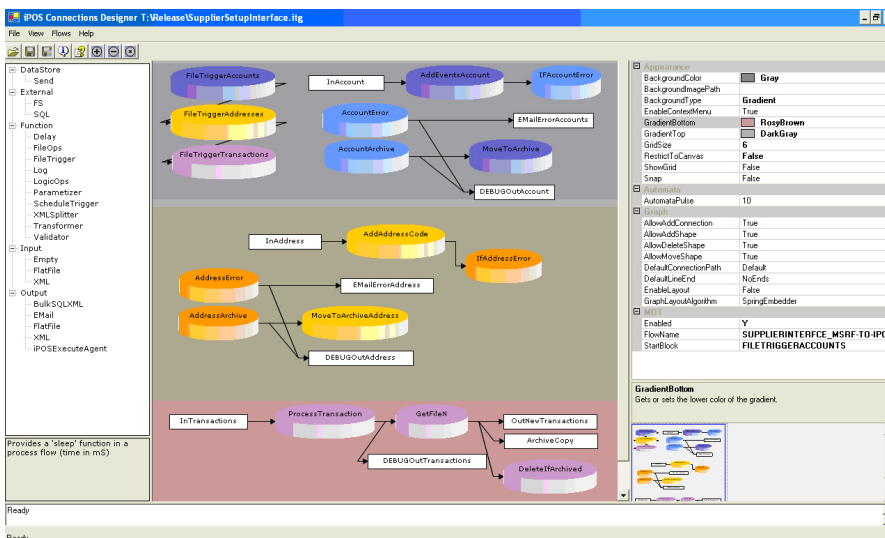
...simpler ...faster ...better

## iPOS Connections extends the boundaries of your systems

iPOS Connections leverages your existing investment in management systems and provides a platform that can adapt to the needs and requirements of your business now and in the future.

Building system-to-system process automation brings genuine benefits to the business in improved data quality, timely operations and reduced risk from human error. iPOS Connections joins up disparate and dependant systems to create enterprise solutions by acting as a hub for system to system data traffic. By managing integration flows that combine traditional data transfer with validation and verification, iPOS Connections delivers exception handling, notification management and data transformation within a structured solution.

Using an intuitive and modular framework iPOS Connections dramatically reduces the development effort, resource demand and risks associated with traditional bespoke integration by providing a common visual management platform. Non IT users can monitor and manage their process flows using a simple web interface, putting exception management back in the hands of the process owner rather than the IT department.



### Platform Pre-requisites

#### Server Platforms

##### Web server (\*)/Application server

- Windows 2000 / Windows 2003 server
- IIS v6 or greater\*
- .NET v1.1
- MDAC 2.7 sp1 or above
- MS SQL - connectivity tools

#### Database server

- Microsoft SQL 2000/5 or MSDE
- MS SQL - connectivity tools
- Oracle

#### Web Client Platform

- Internet Explorer 5.5+

iPOS Connections is part of the iPOS Enterprise suite comprising:

- iPOS eProcurement - procure to pay for SunSystems
- iPOS eLearning - computer based training for eProcurement
- iPOS 3P - business process management outside the transaction lifecycle
- iPOS Performance - Vision Serduct, MRS reporting and OLAP cube analysis

**professional advantage**

Real Difference - Real Value - Every Day

# iPOS Enterprise - Connections

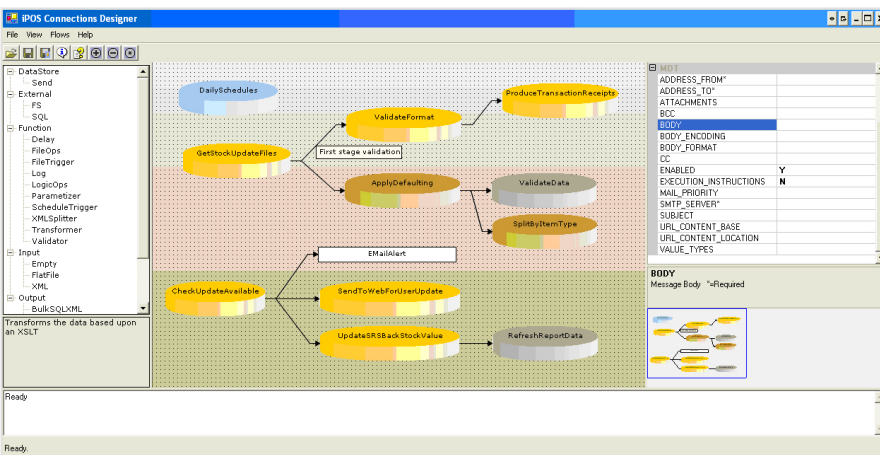
## ...simpler ...faster ...better

In the context of an iPOS eProcurement installation iPOS Connections enables the integration of data sourced from, and targeted at, management systems outside of, but interacting with, the purchasing function. Classic examples include:

- Updating iPOS eProcurement for requisitions from an Asset Management or Point of Sale system.
- Updating the Asset Management or Point of Sale system with invoice details from iPOS eProcurement.
- Updating Stock and Inventory management systems from iPOS eProcurement.
- Integrating iPOS eProcurement to a work order management system.
- Automated updates of Supplier/Product information (EPOS, Financials, ERP, Warehousing, etc).

iPOS Connections can also operate independently of iPOS eProcurement to assist organisations with data integration challenges across their system portfolio. Other sample purposes include:

- Managing and automating overnight business intelligence data warehouse updates and data backup processes (ie if the job fails then email the SyS Admin and start it off again).
- Real time update of Financial System from third party systems (Sales, Purchases, Costs, Quotes, etc).
- Master Data Management (MDM).
- Global integration of local systems (Scheduling, Operational Management, Sales, Forecasting, IT, etc).



Business benefits of iPOS Connections over traditional development integration include:

- Rapid Integration at a fraction of the cost.
- Reduction in design, development and deployment.
- Consistency in data across multiple systems.
- Automated update of disparate systems.
- Single point for all business system integration.
- Reduction in business risk.
- Real time monitoring and exception management.
- Gives operations users the control of their own processes.
- Reduction in reliance on third parties and internal IT resource.
- Extension of legacy systems functionality.